

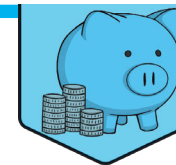
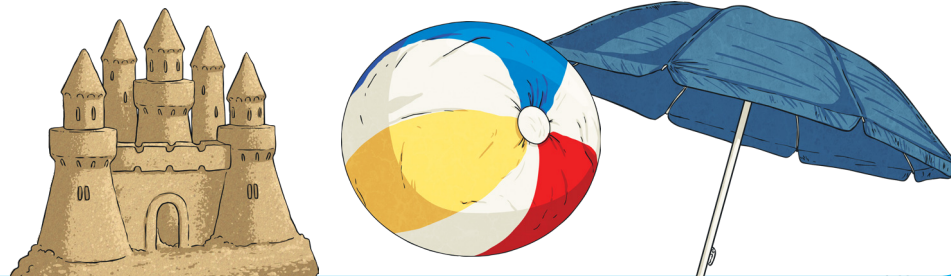
Shopping Scenario Cards

You are planning a party for 20 guests. You need to decorate the room, provide music and prepare healthy snacks for your guests. Work together to look at the shop fronts displayed around the room to work out what to buy and what you will need to spend. Record your spending on a whiteboard.



Shopping Scenario Cards

You are shopping to prepare for a seaside holiday in Britain. You will be visiting the beach and taking picnics with you when you go on days out. You will travel to your holiday destination on the train and the journey will be long. Work together to look at the shop fronts displayed around the room to work out what to buy and what you will need to spend. Record your spending on a whiteboard.



This resource is fully in line with the Learning Outcomes and Core Themes outlined in the PSHE Association [Programme of Study](#).

Shopping Scenario Cards

You are shopping to prepare for a camping holiday in Britain. You will be visiting the seaside and taking picnics with you when you go on days out. You will travel to your holiday destination in the car and the journey will be reasonably long. Work together to look at the shop fronts displayed around the room to work out what to buy and what you will need to spend. Record your spending on a whiteboard.



Shopping Scenario Cards

You are shopping to prepare for a picnic at the park with five friends. You will also need to take some outdoor games with you to play as well. You will walk to the park so need a suitable bag to carry your food in. Work together to look at the shop fronts displayed around the room to work out what to buy and what you will need to spend. Record your spending on a whiteboard.

